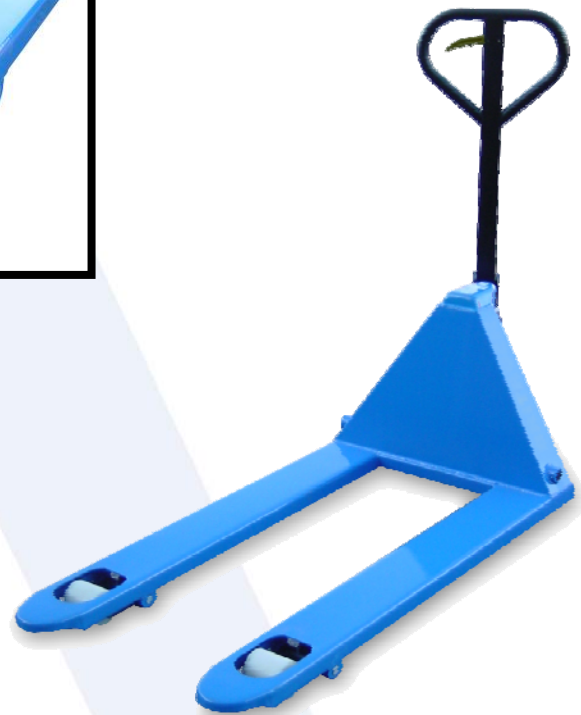
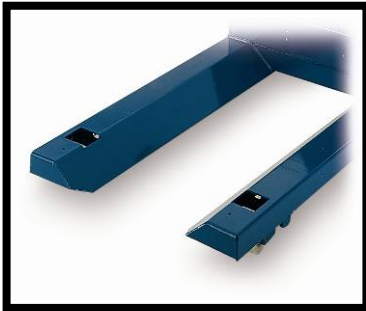


PREMIUM PALLET TRUCKS



- A comprehensive range of pallet trucks to suit all applications
- 2500kg and 3000kg capacities
- Epoxy Powder coated for increased durability
- Reel Trucks available
- Low profile pallet truck (63mm low closed height)
- Hinged or fixed stillage frame
- Special frame widths and lengths
- Optional galvanised frame for extra protection
- Range of optional wheel materials
- Quality British design and manufacture
- Conforms to British and European Safety Standards PREN1757: part 2

Technical Features:

- **High quality hydraulics.**
We design, build and test our pump units for maximum performance with minimum maintenance. Reliability is paramount when designing a product that can be expected to withstand constant repetitive operation.
The premium pump unit incorporates easy access to the hydraulics for easy servicing. With low cost parts conveniently available ex-stock, Advanced Handling gives you value for money, high quality and long life.
- **Strength and Durability.**
High quality components proven by constant testing are standard features on the premium hand pallet truck. Double seal and lubricated for life wheel bearings with nylon bushes fitted at all hinge points. Robot welded fork ends and "A" frame are double strengthened to reinforce areas of high strain, making the structure considerably more durable.
Convenient controlled steering handle with 30mm grip thickness and solid shaped 3-position trigger and protection for operators hands.
- **Wheels**
Not only do we offer the widest range of frame sizes, we also provide a comprehensive range of wheels to suit most floor surfaces and environments.
Large 200mm diameter steer wheel fitted for added ease of movement.
- **Advice**
When using product in cold or explosive environment please seek manufacturers' advice. It is recommended that the operator uses protective shoes when operating a pallet truck.

Technical specification:

Optional ExStandard Pallet Truck (15 combinations) 2500KG capacity

Fork Length A	940 (37")	1010 (40")	1060 (42")	1140 (45")	1215 (48")
Fork Width B	470 (18.5")		521 (20.5")		686 (27")

Options

- Capacities**
 3000KG with strengthened frame & slow lowering valve
- Wheel Options**
 Polyurethane – harder wearing, longer life
 Rubber steer wheels – for smooth, quick operation and maximum floor protection
 Steel – ideal for foundries or swarf littered floors
 Tandem load wheels – for easy pallet entry or uneven surfaces
 Rubber sided bearings for damp environments
- Special Widths & Lengths (May reduce capacity)**
 Widths: Minimum 343 to maximum 1143
 Lengths: Minimum 660 to maximum 2020
- Frames**
 Galvanised frame for extra protection with powder coated pump unit
 Hinged or fixed stillage frame
- Brake Systems**
 Parking Brake
 Dead Man Brake:
 - Operates as dead man brake & parking brake, & to slow the truck on ramps
 - Ideal for use on tail lifts
 - Twin automotive brake operates on steer wheels
 - Brakes fitted with separate adjusters
 - Articulating axle keeps both braked wheel in contact with the floor
- Pump Unit Options**
 Cold Store protection (For temperatures as low as -30 degrees)
 Overload valve
 Slow lowering valve

Low Profile Pallet Truck

(Raised height 184, 63 closed height) 1500KG capacity, fitted with nylon steer wheels and single steel load rollers

FORK LENGTH A	940 (37")	1060 (42")	1215 (48")
FORK WIDTH B	470 (18.5")	521 (20.5")	686 (27")

Paper Reel Truck - Fitted with nylon steer wheels and single nylon load rollers

1500KG capacity, standard fork length 1150 (45")

Type	Maximum Reel Size	Minimum Reel Size	Dimension Over Fingers	Dimension Inside Fingers
RT945-1500-NSN	940 (37")	500 (20")	810 (32")	374 (14.75")
RT1245-1500-NSN	1240 (48.5")	600 (24")	896 (35.5")	460 (18")
RT1545-1500-NSN	1510 (59.5")	750 (29.5")	964 (38")	528 (20.75")

All dimensions are in mm unless otherwise shown

